

Installation

Hot to use the action

Problems

Legal Information

JMQObject

The action is used for embedding QuickTime content in webpages. Website owners, administrators and webmasters are urged to begin profiling and updating their website now in order to provide the best user experience. The JMQObject are backwards compatible with current browsers, but necessary for users of the changed Internet Explorer for Windows. Due to the MS vs. Eolas patent dispute, PC IE users have to click to 'activate' it before interacting with QuickTime content. The QuickTime Object action makes your QuickTime files start automatically without the user having to "click and activate".

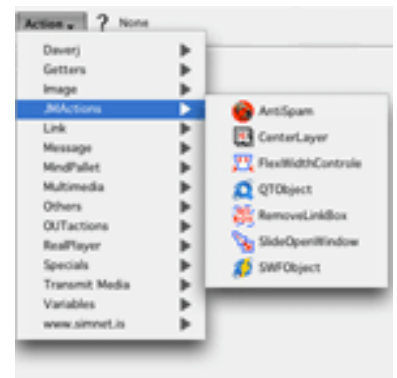
Install GoLive Actions

Unpack the zip file and install the GoLive action by moving or copy the files into your JMActions folder in the GoLive actions directory.

GoLive Application Folder > Modules > JScripts > Actions > JMActions

It's always a good idea to put all your third party actions in a separate folder. If you don't have a "JMAction" folder in the Actions directory, just add a new folder in the Actions folder and name it.

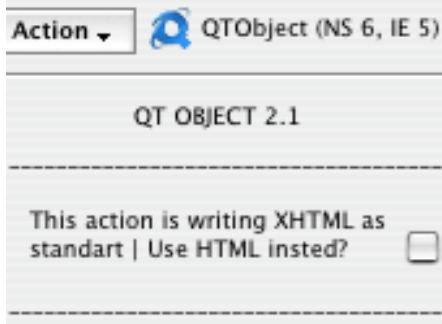
Restart GoLive so the actions are activated. And you are ready to go!



How To Use The Action

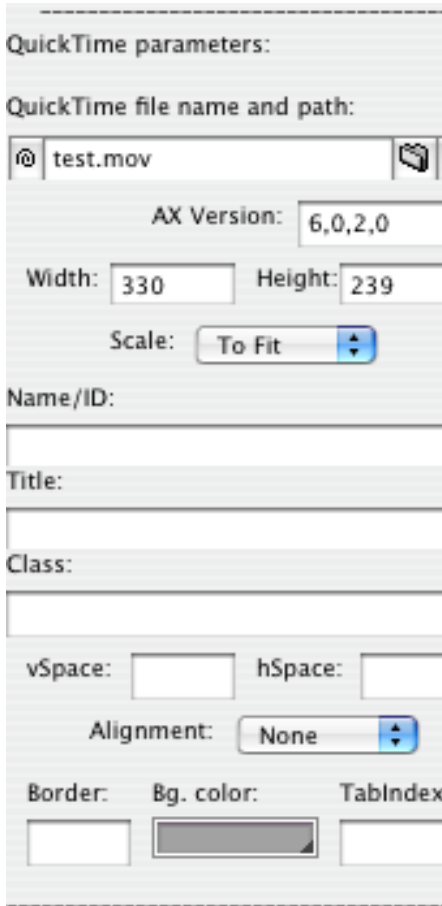
The action is designed to make embedding QuickTime movies as easy as possible, in valid HTML and XHTML documents. Simply drag a "Body action" to the page, add the JMQObject action. and fill in the parameters. The event shud be OnParse.

OBS. You shall not to place the QuickTime file on the page, only the action.



Parameters

By default the action writes XHTML.
If HTML4.01 i wanted insted, check the HTML box



QuickTime File

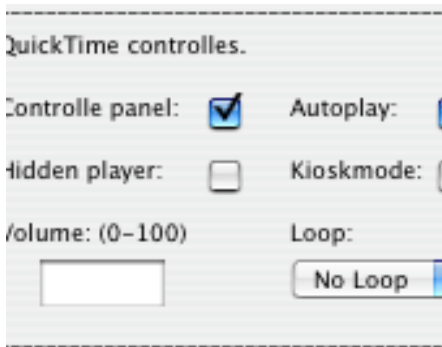
QuickTtime URL - The QuickTime files URL path and name.
ActiveX Version - Default set to version 6,0,2,0

Width - The width the QuickTime movie.
Height - The height of the QuickTime movie, without controle panel. The action will add 16px if controle panel is on.
Scale - Scaling the QuickTime movie. "To Fit" Scales the movie to fit the embedding box. "Aspect" scale the movie to fit the embeded box mantaining the proportions.

Name/ID - The Movies can be identified by Name/ID.
Title - The Tiltle of the Movie.
Class - The Movies class.

vSpace & hSpace - Vertical and Horizontal spacing.
Align - The alignmet your QuickTime movie.

Border - Set QuickTime border.
Background color - Set the value for the background color (Default is transparent)
Tab Index - Tabulator index number.

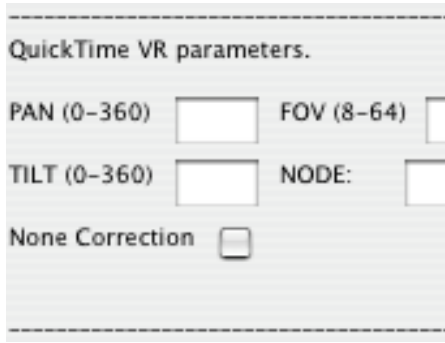


Controlle parameters

Controlle panel - Set the visibility of the movie controller.
(note: For compatibility with existing web pages, the Controlle panel for QuickTime VR movies, image files, and flash files, shud be Off.)

Autoplay - Makes the movie to start playing as soon as the QuickTime is loadet.
Hidden Player - Use for audio-only. If Player is hidden, autoplay is on.
Kioskmode - When on, the QuickTime does not include its QuickTime menu in the movie controller and does not allow drag and drop to save the movie.
Volume - By default,volume is 100. 0 effectively mutes the audio.
Loop - The loop attribute makes the movie play continuously. Setting loop to Palindrome causes the movie to play alternately

forwards and backwards.



QuickTime VR parameters

PAN - Allows you to specify the initial pan angle.

TILT - Allows you to specify the initial tilt angle.

FOV - Allows you to specify the initial field of the view angle.

NODE - The NODE attribute allows you to specify the initial node for a multi-node QuickTime VR movie.

Correction - This attribute is only appropriate for QuickTime VR panoramas. Correction can either be None or Full. By default the correction is Full.

Problems

Action is greyed out.

Are you having problems with the action not being visible or is greyed out? The fix is very simple.

1. Open the action file in GoLive, just like any other file.
2. Save the file using "save as" with the original name.
3. Restart GoLive and the action should now be available.
(Doing this will cause the icon to disappear but the action should now work)

?

GoLive CS2.

GoLive CS2 users may have some problem with using 3part actions due to a minor bug in CS2.

The problem is that CS2 won't use the action (put it in the scriptLib). normally this problem is solved by flattening the scriptLibery when adding the action (normally this only has to be done first time using the action).

Another solution if flattening the scriptlibery doesn't work is to open the action file in GoLive, just like any other file. make a small change, and change back again and then save it. Or do as if the action is grayed out (see above)

If you can't get my actions to work please feel free to contact me.

§

Legal Information

Unless otherwise mentioned, the material is made and owned by me (Jesper G.O. Møller)

You may not remove my name from any of my materials.

J.G.O.M. can not be held responsible for the use of any action.

For material not made by me, please contact the owner.

FreeWear

All my GoLive actions are totally free for private, non commercial use, and you may use them as you like, as long as you don't sell it or use it for any criminal purpose.

If you like my work, and want to credit me for my work please link to my pages.

CareWear - Commercial use

If you want to use my GoLive actions for comercial sites/use, please make a donation you find fit, to a charity of your choice. And mail me a copy of the transfer.

That is what I call CareWear.

Best regards

Jesper G.O. Møller www.jart.dk/jgom/